

**Faculty:** Architecture  
**Course Code & Number:** ARCH 301  
**Type of Course:** Compulsory  
**Course Credit Hours:** (2+8+0) 6 / 12 ECTS  
**Language of Instruction:** English

**Department:** Architecture  
**Course Title:** Architectural Design III  
**Semester:** Fall  
**Pre-requisite:** ARCH202 Architectural Design II  
**Mode of Delivery:** Face-to-face in rotation

### INSTRUCTORS

**Seray Türkay** (Room No: F422)  
**Heves Beşeli** (Room No: D012)  
**Melis Acar (RA)** (Room No: F025)  
**Can Aker**  
**Özgün Özçakır**  
**Ekin Çoban Turhan**

### CATALOG DESCRIPTION

Holistic approach to cultural, social, and ecological sustainability in historic urban contexts. Emphasis on the relationship between the tectonic, structural, and programmatic organization and the urban context. Universal Design Principles.

### COURSE OBJECTIVE

The course covers design problems on an urban scale by accounting for the cultural, historical and environmental conditions. It underlines the relationship between architecture and urban context and questions the complex relations that a building sets with its environment. In doing so, students are expected to engage in various analytical processes that inform and inspire the study of spatial, structural, environmental, technological and material qualities, which are to be reflected in form, program, construction system and tectonics of architecture.

### LEARNING OUTCOMES

Upon successful completion of this course, a student will be able to

1. solve multi-dimensional design problems by focusing on the effects of environmental forces, and cultural, social and historical conditions,
2. define methodological approaches for contextual analyses, form generation processes and the expression of architectural forms in line with the environmental, cultural and historical inputs,
3. Interpret an architectural program as the formulation of relationships between activities and patterns of use,
4. Develop design strategies considering the requirements of the program, structural organization and material qualities,
5. design accessible and inclusive environments with integrated solutions.

### STUDENT WORKLOAD

Studio: 140hrs, Assignments & Final Project: 190hrs – TOTAL: 330hrs

### EVALUATION

Students will be evaluated on the basis of the quality and process of the work, the completion of assignments, and contribution to the studio environment. It is reminded that proper, elaborate and regularly updated documentation of the studio work is important.

Warm-up Project: 10%  
Site Analyses: 10%  
Pre-jury 1: 15%  
Pre-jury 2: 15%  
Final Jury: 40%  
Contribution and Attendance: 10%

**GRADING SYSTEM**

For each course taken, the student is given one of the following grades by the course teacher. The letter grades, coefficients and percentage equivalents are given below.

AA 4.0 / 100-90

BA 3.5 / 89-85

BB 3.0 / 84-80

CB 2.5 / 79-75

CC 2.0 / 74-70 average

DC 1.5 / 69-60

DD 1.0 / 59-50 unsatisfactory

F 0.0 / 49-0 fails to follow requirements of the assignment

FX 0

**LATE SUBMISSION**

Late work will not be accepted unless it qualifies as excused. All assignments are due at the date and time indicated. Late assignments if otherwise accepted will be downgraded. Incomplete work is generally discouraged. Severe incompleteness will be evaluated based upon the degree of incompleteness. All assignments are due in completed form.

**LANGUAGE**

The studio discussions and all of your presentations will be in English. Developing your verbal language skills will be very important in acquiring design terminology as well as daily communication in the studio.

**STUDIO RULES**

You are advised to read and follow "Studio Rules of the Face-to-face Education Transition Period" provided for the Faculty of Architecture and Design. Since design studio constitutes the backbone of your architectural education, all students are required to attend every studio session and activities and expected to actively participate in all discussions and pin-ups. Assignments must be submitted and presentations should be performed on time. As future architects you are responsible for the proper use and maintenance of studio space. It is important to keep studio space neat, clean and organized for achieving a better studying environment. Clean the space around you and your tables regularly. Any cutting activity directly on your tables or any surface (walls, floors etc.) at the studio without using proper cutting mats or cutting glass and using permanent color in the studio space are strictly forbidden. Defacing any school property within the studio space will not be tolerated.

**ATTENDANCE**

Attendance is mandatory at all scheduled classes. Studio is held Tuesday and Friday beginning at 9:00 AM and ending at 15.00 PM. Any student arriving after 9:15 AM will be considered late and arrivals after 10:00 AM will be considered as absent. The only excused absences are those for reasons of documented health or crisis issues, and you must alert your critic or the studio coordinator. Unexcused absences, late arrivals, or early departures from class will reduce your course grade. You may not leave class early or after a desk critique. Use your studio time creatively and productively so that you are not simply waiting for your critic.



# SUGGESTED READINGS

## SUGGESTED READINGS

M. Christine Boyer, *The City of Collective Memory; Its Historical Imagery and Architectural Entertainments*, Cambridge, Massachusetts: The MIT Press, 1994.

Sibel Bozdoğan and Esra Akcan, *Modern Architectures in History: Turkey*, London: Reaktion Books, 2012.

Carol Burns and Andrea Kahn (eds), *Site Matters: Design Concepts, Histories and Strategies*, London: Routledge, 2005.

Vincent Canizaro (ed), *Architectural Regionalism: Collected Writings on Place, Identity and Tradition*, New York: Princeton Architectural Press, 2007.

Kenneth Frampton, "Towards a Critical Regionalism: Six Points for an Architecture of Resistance," in Hal Foster (ed), *The Anti-Aesthetic: Essays on Postmodern Culture*, Port Townsend, WA: Bay Press, 1983.

Kenneth Frampton, "Prospects for a Critical Regionalism," *Perspecta*, no.20, 1983.

Kenneth Frampton, *Modern Architecture: A Critical History*, London: Thames & Hudson, 1985.

Norman Foster and Chris Abel, *Carre d'Art, Nîmes: Foster + Partners*. Munich: Prestel, 2011.

Frank Peter Jäger (ed), *Old and New: Design Manual for Revitalizing Existing Buildings*, Basel: Birkhäuser, 2010.

Spiro Kostof, *The City Shaped: Urban Patterns and Meanings Through History*. London: Thames and Hudson, 1991.

Spiro Kostof, *The City Assembled: Elements of Urban Form Through History*. London: Thames and Hudson, 1992.

Paul L. Knox, *Palimpsests: Biographies of 50 City Districts: International Case Studies of Urban Change*, Basel: Birkhäuser, 2012.

Alexander Tzonis and Liane Lefaivre, "The Grid and the Pathway: An Introduction to the Work of Dimitris and Suzana Antonakakis, with Prolegomena to a History of the Culture of Modern Greek Architecture," *Architecture in Greece*, no. 15, 1981.

**\*ANKARA**

"ANCYRA (Ankara) Galatia, Turkey." The Princeton Encyclopedia of Classical Sites. [www.perseus.tufts.edu/hopper/text?doc=Perseus:text:1999.04.0006:entry=ancyra](http://www.perseus.tufts.edu/hopper/text?doc=Perseus:text:1999.04.0006:entry=ancyra).

Ayhan Koçyiğit, E.S. (2018). A Tale of Ulus square: a critical assessment of continuity, transformation and change in a historic public open space in Ankara. Unpublished PhD Dissertation. Graduate Program in Conservation of Cultural Heritage, Middle East Technical University, Ankara.

Cengizkan, A. (1994). "Momentum Ankara." *Ankara Ankara*, ed. Enis Batur. İstanbul: Yapı Kredi Yayınları, pp. 487-506.

Cengizkan, A. (2009). "Ankara 1923-1938: The Modern and Planned Capital of a Contemporary Nation State." *ANKARA: City of the Black Calpac 1923-1938*. ed. Ekrem Işın. İstanbul Research Institute Catalogues 6. İstanbul: Mas Matbaacılık, pp. 17-63.

Çalışkan, O. (2004). Urban Compactness: A Study of Ankara Urban Form. Unpublished Master Thesis, Graduate Program in Urban Design, Middle East Technical University, Ankara.

Çalışkan, O. (2009) "Forming a Capital: Changing Perspectives on the Planning of Ankara (1924-2007) and Lessons for a New Master-Planning Approach to Developing Cities." *Footprint, Metropolitan Form*, pp. 23-53.

Foss, C. (1977). "Late Antique and Byzantine Ankara." *Dumbarton Oaks Papers*, v, 31.

Günay, B. (2012) "Ankara Spatial History," Planning to Avoid: The 26th AESOP Congress, Ankara.

Günay, B. (1992). "Fact Sheet: Ankara", in *Selected Papers on Urban Regional Issues, Urban Planning and Design*, Ankara: METU, Department of City Planning.

Işın, E. (ed.) (2009). *Ankara: City of the Black Calpac 1923-1938*, İstanbul: İstanbul Research Institute Catalogues 6. İstanbul: Mas Matbaacılık.

Kezer, Z. (2010). "The Making of Early Republican Ankara," *Architectural Design*, 203, pp.40-45.

Koç, B. (2012). "Ankara at the Last Quarter of the 19th Century According to Yearbooks of Ankara Province." *Tarihte Ankara Uluslararası Sempozyumu Bildirileri*, v, I, Ankara: Matser Basın Yayın, pp. 445-462.

Mihçioğlu Bilgi, E. (2010). The Physical Evolution of Historic City of Ankara between 1839 and 1944: A Morphological Analysis. Unpublished Dissertation, Middle East Technical University.

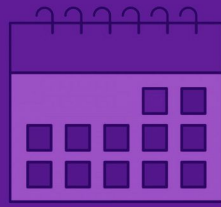
Mutlu, Ö. (2012). Integration of the Roman Remains in Ulus Ankara Within The Current Urban Context. Unpublished Master Thesis, Graduate Program in Restoration, Middle East Technical University, Ankara.

Sak, S., & Senyapili, B. (2019). "Evading Time and Place in Ankara: A Reading of Contemporary Urban Collective Memory Through Recent Transformations," *Space and Culture*, 22(4), 341-356.

# TENTATIVE TIME TABLE

# TENTATIVE TIME TABLE

# TENTATIVE TIME TABLE



## TIME TABLE

W1	OCT 05	Introduction & Syllabus
	OCT 08	Research and Documentation Discussions  Lecture: "Development of Ankara and Evolution of Its Public Spaces Through History," by Elif Selena Ayhan Koçyiğit
W2	OCT 12	Site survey I: Ulus In-situ mappings Ulus tour with in-situ lectures by Özgün Özçakır
	OCT 15	Site survey II: Ankara Citadel & Kale Mahallesi Historic buildings and traditional residential tissue  In-situ lecture: "Erimtan Archaeology and Art Museum – New Buildings in Historic Contexts," Can Aker In-situ lecture: "Ankara Citadel, Kale Mahallesi and Traditional Construction Techniques," by Özgün Özçakır
W3	OCT 19	Site Analyses: Discussion & Reviews
	OCT 22	Site Analyses: Discussion & Reviews
W4	OCT 26	Site Analyses: Discussion & Reviews <u>Warm-up Project: Co-building a Pavilion for/by All</u>  Lecture: "An Integrated Process for 1/1 Learning," Onur Yüncü
	OCT 29	* National Holiday
W5	NOV 02	<u>Site Analyses Submission</u>  Warm-up Project Reviews
	NOV 05	Warm-up Project Reviews  <i>NIT URBAN HERITAGE LAB: Industrial Heritage for Sustainable Cities</i> Lecture: "On the Traces of the Old: Architectural Conservation and Adaptive Reuse of British Oil Mill in Mersin" by Seray Türkay Coşkun, Esatcan Coşkun, Onur Yüncü, Umut Bilgiç, Merve Çolak
W6	NOV 09	<u>Warm-up Project Submission</u>  Final Project issued: <b>ULUS COMMONED</b> Initial Ideas, concepts, strategies and program
	NOV 12	Initial Ideas, concepts, strategies and program
W7	NOV 16	Initial proposals (1/500)
	NOV 19	Initial proposals (1/500)

W8	NOV 23	Initial proposals (1/500)
	NOV 26	Pre-jury 1
W9	NOV 30	Pre-jury 1
	DEC 03	Studio Crits (1/500, 1/200)  <i>NIT URBAN HERITAGE LAB: Industrial Heritage for Sustainable Cities Lecture: Lecture David Gianotten (Office for Metropolitan Architecture - OMA)</i>
W10	DEC 07	Studio Crits (1/500, 1/200)
	DEC 10	Studio Crits (1/500, 1/200)
W11	DEC 14	Studio Crits (1/200)
	DEC 17	Studio Crits (1/200)
W12	DEC 21	Pre-jury 2
	DEC 24	Pre-jury 2
W13	DEC 28	Studio Crits (1/200, 1/100)
	DEC 31	Studio Crits (1/200, 1/100)
W14	JAN 04	Last Studio Crits
	JAN 07	Last Studio Crits
FINAL JURY	JAN 10-21 (The exact date will be announced later)	Final Submission
		Final Jury Day(s)



# THE STUDIO RULES FOR TEDU ARCHITECTURE AND DESIGN FACULTY STUDENTS

**Yüzyüze Eğitime Geçiş Döneminde Stüdyo Kuralları**

Aşağıdaki kurallar TED Üniversitesi tarafından açıklanan yüzyüze eğitime geçişte mekân kullanımı kurallarına ek olarak tanımlanmıştır. Lütfen, genel kuralları da okuyunuz ve riayet ediniz.

- Stüdyolarda, diğer dersliklerde ve iç mekânlarda olduğu gibi, sıhhi maske takmak zorunludur. Bu konuda Genel Sekreterlik tarafından açıklanan kural ve yaptırımlar uygulanacaktır.
- Bu dönemde stüdyolarda eğitim, diğer dersliklerde olduğu gibi 40 dakika ders, 20 dakika ara biçiminde yürütülecektir. Aralarda stüdyolar havalandırılacaktır.
- Öğretim üyeleri, kendi istekleriyle ve opsiyonel olarak ders saati dışı zamanlarda kritiklerine devam ederlerse, dersler için geçerli olan 40 dakikada bir 20 dakika ara vermek koşulunu işletmek durumundadırlar.
- Öğrenciler stüdyoları hafta içi 18:00'e kadar (ARTEM çalışanlarının paydos saati) ders saatleri dışında çalışma amaçlı olarak kullanabilirler. Burada stüdyolar tarafından belirlenmiş günlük öğrenci sayısını aşmamak esastır. Örneğin dersler 40 kişilik gruplar halinde dönüşümlü yapılıyorsa, ders dışında kullanımda mekânda 40 kişinin üstüne çıkılmamalıdır. Maske takma zorunluluğu bu tür kullanımlar için de geçerlidir.
- Stüdyolar -stüdyo dışı derslerin sınavları hariç- hafta içi 18:00'den sonra ve haftasonu, kapalı olacak ve çalışma amaçlı kullanılamayacaktır.
- Stüdyolarda, ders saatlerinde ve ders dışı kullanılabilir olarak tanımlanmış saatlerde, içecek ve yiyecek açıkta bulundurulmayacak ve tüketilmeyecektir.
- Stüdyolara girişte kapıda bulunan dezenfektanlar kullanılacaktır. Ders materyalleri mümkün olduğunca paylaşılmayacak, paylaşıldığında hijyen koşulları sağlanıldığından emin olunacaktır. Kişisel eşyalar mümkün olduğunca birbirinden ayrı yerleştirilecektir.
- Maket atölyesi eskiden olduğu gibi randevulu ve bu mekan için belirlenmiş kişi sayı kısıtları içinde kullanılabilir.

**Studio Rules of the Face-to-face Education Transition Period**

The rules below are additional measures to the already declared TED University face-to-face education transition period general sanitary rules. Please also read and obey the general rules.

- It is obligatory to put on sanitary mask in the studios (as it is for all the campus area). In this regard, the sanitary rules declared by the General Secretary will be valid and applied.
- In this term education in the studios (as for the other classes) will be in intervals of 40 minutes class and 20 minutes break. The spaces will be ventilated during the breaks.
- In case the instructors will give additional and optional critiques outside the class hours, the rule of 40 minutes conduct and 20 minutes break will still be applied.
- Outside the class hours, the students can use the studios from Monday to Friday until 18:00 (the time when ARTEM personnel finishes work) for studying and working purposes. It is essential not to exceed the number of students assigned for each studio. For example, if the studio is conducted as groups of 40 students rotationally, the number of users outside the class hours should not exceed 40 persons. The obligatory mask rule still applies for this kind of usages.
- With the exception of exams, the studios will be closed and will not be used for studying and working purposes in the week-end and after 18:00 hours in the week-days.
- It will not be possible to consume and keep in the open drink and food in the studios within and without the classes.
- Entering the studio, the disinfectants placed near the gates will be used. The class material will not exchanged as much as possible and if they are exchanged the sanitary rules will be followed. Personal belongings will be placed apart from other's belongings as much as possible.
- The model lab will be working as usual by registration within the assigned limit of people in that space.